



Communities against  
Violence in Cleveland

Sharon Cooney

INTEGRITY

BENEVOLENCE

SERVICE



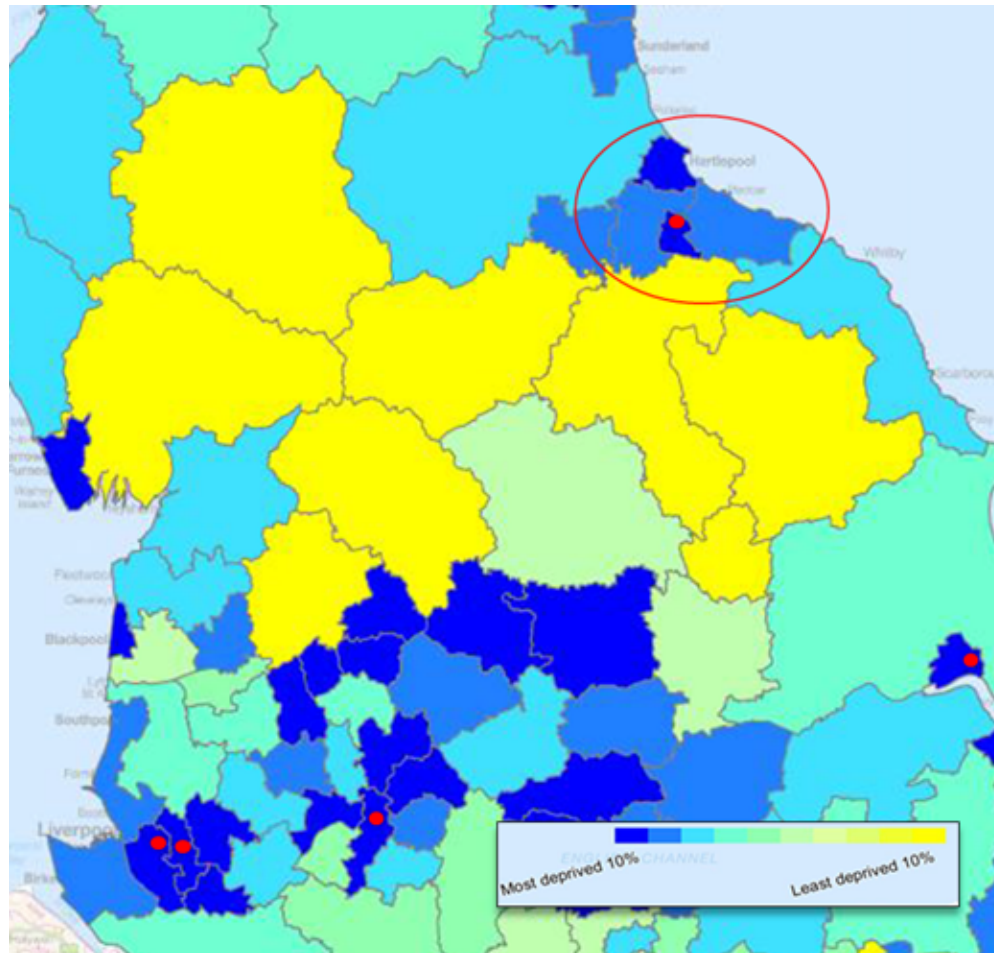
# What is CAVIC?

- **New LONG TERM initiative to strengthen our approach to tackling violence:**
  - Innovative approaches to achieving objectives**
  - Best practice**
  - Minimise lost opportunities to improve public safety**
  - Sharing what works to deliver consistency**
- **Develop long term plans to:**
  - Reduce the risk of being victim of violence**
  - Reduce the causes of violence and its drivers**
  - Problem solve series of violence, hotspots, repeat offenders and victims**
  - Develop a cultural intolerance to violence in Cleveland**

# Continued .....

- **What we hope to achieve one step at a time:**
  - development of a resource for all including victims, practitioners and, if appropriate offenders**
  - Education**
  - Influencing & changing attitudes towards violence**
  - Reducing offender behaviour**
  - Changing culture**

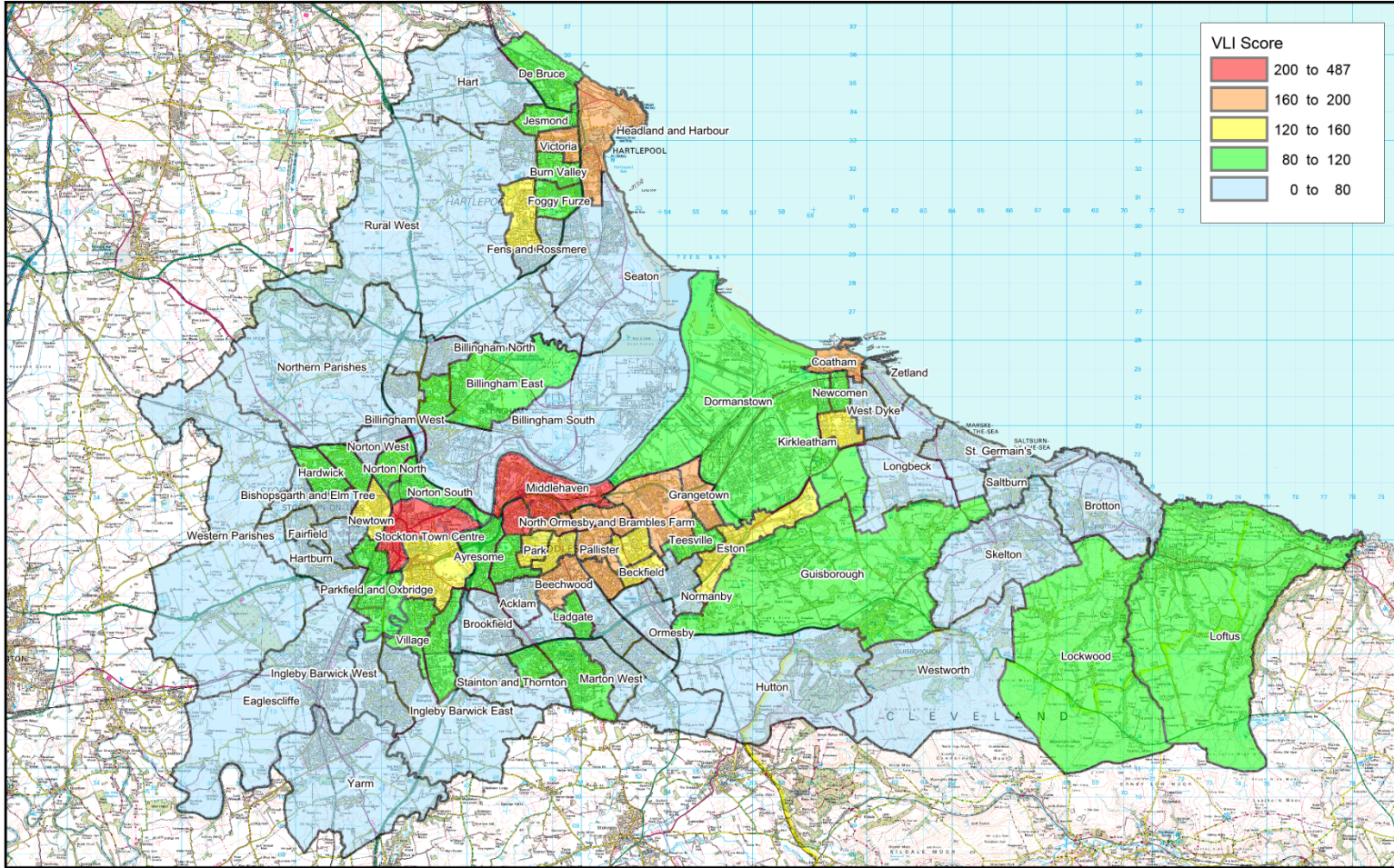
# Cleveland at a glance .....





CLEVELAND POLICE

# Vulnerable localities index results



INTEGRITY

BENEVOLENCE

SERVICE



# Topping all the wrong charts



**WHERE IT'S GRIM ... THE TOP 20**

1	Middlesbrough	11	Blackpool
2	Hull	12	Hackney, E. London
3	Newham, E. London	13	Stoke-on-Trent
4	Nottingham	14	Barking & Dagenham, Lond
5	Merthyr Tydfil, S. Wales	15	Doncaster
6	North East Lincolnshire	16	Cannock Chase, Staffordshi
7	Islington, N. London	17	Manchester
8	Blaenau Gwent, S. Wales	18	Haringey, N. London
9	Mansfield, E. Midlands	19	Burnley, Lancashire
10	Knowsley, Merseyside	20	Hartlepool

**TEN WORST**

- 1: Middlesbrough
- 2: Blackpool
- 3: Manchester
- 4: Nottingham
- 5: Liverpool
- 6: Knowsley
- 7: Hastings
- 8: Hull
- 9: Salford
- 10: Sandwell

**TEN BEST**

- 1: Waverley
- 2: Rushcliffe
- 3: Chiltern
- 4: Mole Valley
- 5: Epsom and Ewell
- 6: Rutland
- 7: Elmbridge
- 8: Wokingham
- 9: St Albans
- 10: East Hertfordshire



# Local Press Sept 2016

[G](#) » [News](#) » [Teesside News](#) » [Cleveland Police](#)

## Police deal with a staggering 600 violent incidents in Teesside schools

INTEGRITY

BENEVOLENCE

SERVICE

# What is violence?

- The intentional use of physical force or power, threatened or actual, against oneself, another person, or against a group or community, which either results in or has a high likelihood of resulting in injury, death, psychological harm, mal-development, or deprivation“
- Violence can be divided into three broad categories:
  - self-directed violence (self abuse/suicidal behaviour)
  - interpersonal violence (Family or partners)
  - collective violence (groups, organisations, etc)
- Violent acts can be:
  - Physical
  - Sexual
  - Emotional
  - Psychological



# Causes of violence

- Deprivation/poverty – Social & Economic
- Drug/Alcohol misuse
- Witnessed violence
- Mental disorders/illness
- Propensity to be violent – background/genetics

# Triggers

**Trigger** – a social factor residing outside of the individual committing the act

- Live event/incident
- Violence in the media
- Alcohol/drug consumption
- Heat/Overcrowding/sensory overload
- External influences eg social media

# Effective methods

- Public Health Approach
- Early intervention – children/young people
- Partnership engagement for support services
- Sharing of information, tactics and practices
- Education – at all ages and levels
- Life skills
- Supported Criminal justice action
- Branding and repetition – CAVIC

# Discussion areas

- Support through partnership
- Confidence to challenge and report
- Diversionary activity
- Awareness & Understanding of causes/triggers
- How can we have an impact together?
- Where do we go from here?



Communities against  
Violence in Cleveland

Join us in the fight against violence in  
Cleveland

Thank you

